

Surface Mount

Monolithic Amplifier

DC-6 GHz

Product Features

- High gain, 25.6 dB typ. at 100 MHz
- High IP3, 38 dBm typ.
- High Pout, P1dB 21.9 dBm typ.
- Transient Protected
- Excellent ESD Protection
- Unconditionally stable
- Aqueous washable
- Protected by US Patent 6,943,629

Typical Applications

- Base station infrastructure
- Portable Wireless
- CATV & DBS
- MMDS & Wireless LAN

General Description

Gali \square 84+ (RoHS compliant) is a wideband amplifier offering high dynamic range. Lead finish is SnAgNi. It has repeatable performance from lot to lot, and is enclosed in a SOT-89 package. It uses patented Transient Protected Darlington configuration and is fabricated using InGaP HBT technology. Expected MTBF is 1200 years at 85°C case temperature. Gali \square 84+ is designed to be rugged for ESD and supply switch-on transients.



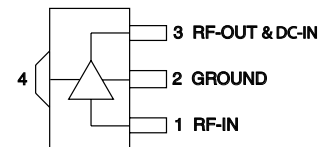
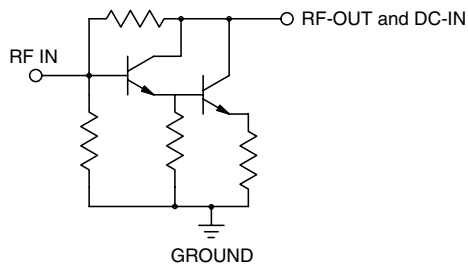
Gali \square 84+

CASE STYLE: DF782
PRICE: \$1.99 ea. QTY. (25)

+ RoHS compliant in accordance with EU Directive (2002/95/EC)

The +Suffix has been added in order to identify RoHS Compliance. See our web site for RoHS Compliance methodologies and qualifications.

simplified schematic and pin description



Function	Pin Number	Description
RF IN	1	RF input pin. This pin requires the use of an external DC blocking capacitor chosen for the frequency of operation.
RF-OUT and DC-IN	3	RF output and bias pin. DC voltage is present on this pin; therefore a DC blocking capacitor is necessary for proper operation. An RF choke is needed to feed DC bias without loss of RF signal due to the bias connection, as shown in "Recommended Application Circuit".
GND	2,4	Connections to ground. Use via holes as shown in "Suggested Layout for PCB Design" to reduce ground path inductance for best performance.

Mini-Circuits®
ISO 9001 ISO 14001 CERTIFIED

ALL NEW
minicircuits.com

P.O. Box 350166, Brooklyn, New York 11235-0003 (718) 934-4500 Fax (718) 332-4661 For detailed performance specs & shopping online see Mini-Circuits web site



The Design Engineers Search Engine Provides ACTUAL Data Instantly From MINI-CIRCUITS At: www.minicircuits.com

RF/IF MICROWAVE COMPONENTS

REV. A
M108520
ED-11756/3E
GALI-84+
070119
Page 1 of 4

Electrical Specifications at 25°C and 100mA, unless noted

Parameter	Min.	Typ.	Max.	Units	Cpk
Frequency Range*	DC		6	GHz	
Gain				dB	≥1.5
	f=0.1 GHz	24.3	25.6	26.9	
	f=1 GHz		22.7		
	f=2 GHz	18.2	19.2	20.2	
	f=3 GHz		16.7	15.8	
	f=4 GHz	14.3	15.0		
	f=6 GHz		11.8		
Magnitude of Gain Variation versus Temperature (values are negative)				dB/°C	
	f=0.1 GHz		0.0025		
	f=1 GHz		0.0036	0.0090	
	f=2 GHz		0.0045		
	f=3 GHz		0.0057		
	f=4 GHz		0.0074		
	f=6 GHz		0.0148		
Input Return Loss				dB	
	f=0.1 GHz		25.8		
	f=1 GHz	14.0	21.2		
	f=2 GHz		18.0		
	f=3 GHz		15.6		
	f=4 GHz		14.7		
	f=6 GHz		16.7		
Output Return Loss				dB	
	f=0.1 GHz		16.3		
	f=1 GHz	6.0	11.0		
	f=2 GHz		8.9		
	f=3 GHz		9.0		
	f=4 GHz		9.7		
	f=6 GHz		8.4		
Reverse Isolation	f=2 GHz	22	26.5	dB	
Output Power @1 dB compression				dBm	≥1.5
	f=0.1 GHz	20.8	21.9		
	f=1 GHz	20.4	21.5		
	f=2 GHz	20.1	21.2		
	f=3 GHz		20.9		
	f=4 GHz		19.2		
	f=6 GHz		15.5		
Saturated Output Power (at 3dB compression)				dBm	
	f=0.1 GHz		23.0		
	f=1 GHz		22.6		
	f=2 GHz		22.1		
	f=3 GHz		21.7		
	f=4 GHz		20.3		
	f=6 GHz		17.1		
Output IP3				dBm	≥1.5
	f=0.1 GHz	33.8	37.6		
	f=1 GHz	34.0	37.8		
	f=2 GHz	34.2	38.0		
	f=3 GHz		37.4		
	f=4 GHz		34.7		
	f=6 GHz		32.7		
Noise Figure				dBm	≥1.5
	f=0.1 GHz		4.2		
	f=1 GHz		4.4		
	f=2 GHz		4.4		
	f=3 GHz		4.4		
	f=4 GHz		4.6		
	f=6 GHz		5.3		
Group Delay	f=2 GHz		94	psec	
Recommended Device Operating Current			100	mA	
Device Operating Voltage	5.4	5.8	6.2	V	≥1.5
Device Voltage Variation vs. Temperature at 80mA			-3.6	mV/°C	
Device Voltage Variation vs Current at 25°C			3.3	mV/mA	
Thermal Resistance, junction-to-case ¹			64	°C/W	

*Guaranteed specification DC-6 GHz. Low frequency cut off determined by external coupling capacitors.

Absolute Maximum Ratings

Parameter	Ratings
Operating Temperature*	-45°C to 85°C
Storage Temperature	-65°C to 150°C
Operating Current	160mA
Power Dissipation	1W
Input Power	13 dBm

Note: Permanent damage may occur if any of these limits are exceeded. These ratings are not intended for continuous normal operation.
¹Case is defined as ground leads.
 *Based on typical case temperature rise 9°C above ambient.



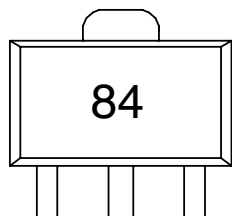
P.O. Box 350166, Brooklyn, New York 11235-0003 (718) 934-4500 Fax (718) 332-4661 For detailed performance specs & shopping online see Mini-Circuits web site



The Design Engineers Search Engine Provides ACTUAL Data Instantly From MINI-CIRCUITS At: www.minicircuits.com

RF/IF MICROWAVE COMPONENTS

Product Marking



Additional Detailed Technical Information

Additional information is available on our web site. To access this information enter the model number on our web site home page.

Performance data, graphs, s-parameter data set (.zip file)

Case Style: DF782

Plastic package, exposed paddle, lead finish: tin/silver/nickel

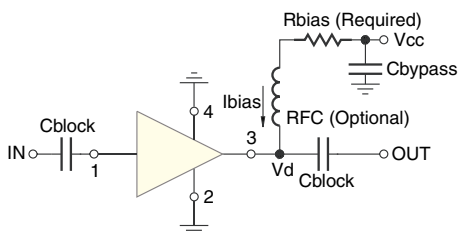
Tape & Reel: F55

Suggested Layout for PCB Design: PL-019

Evaluation Board: TB-409-84+

Environmental Ratings: ENV08T2

Recommended Application Circuit



Test Board includes case, connectors, and components (in bold) soldered to PCB

R BIAS	
Vcc	"1%" Res. Values (ohms) for Optimum Biasing
8	22.1
9	32.4
10	42.2
11	52.3
12	61.9
13	71.5
14	82.5
15	93.1
16	102
17	113
18	121
19	133
20	140

ESD Rating

Human Body Model (HBM): Class 1C (1000v to < 2000v) in accordance with ANSI/ESD STM 5.1 - 2001

Machine Model (MM): Class M2 (< 100v) in accordance with ANSI/ESD STM 5.2 - 1999

MSL Rating

Moisture Sensitivity: MSL1 in accordance with IPC/JEDECJ-STD-020C

No.	Test Required	Condition	Standard	Quantity
1	Visual Inspection	Low Power Microscope Magnification 40x	MIP-IN-0003 (MCT spec)	45 units
2	Electrical Test	Room Temperature	SCD (MCL spec)	45 units
3	SAM Analysis	Less than 10% growth in term of delamination	J-Std-020C (Jedec Standard)	45 units
4	Moisture Sensitivity Level 1	Bake at 125°C for 24 hours Soak at 85°C/85%RH for 168 hours Reflow 3 cycles at 260°C peak	J-Std-020C (Jedec Standard)	45 units

MSL Test Flow Chart

